



# WETLAND RESTORATION IN THE GREAT BLACK SWAMP

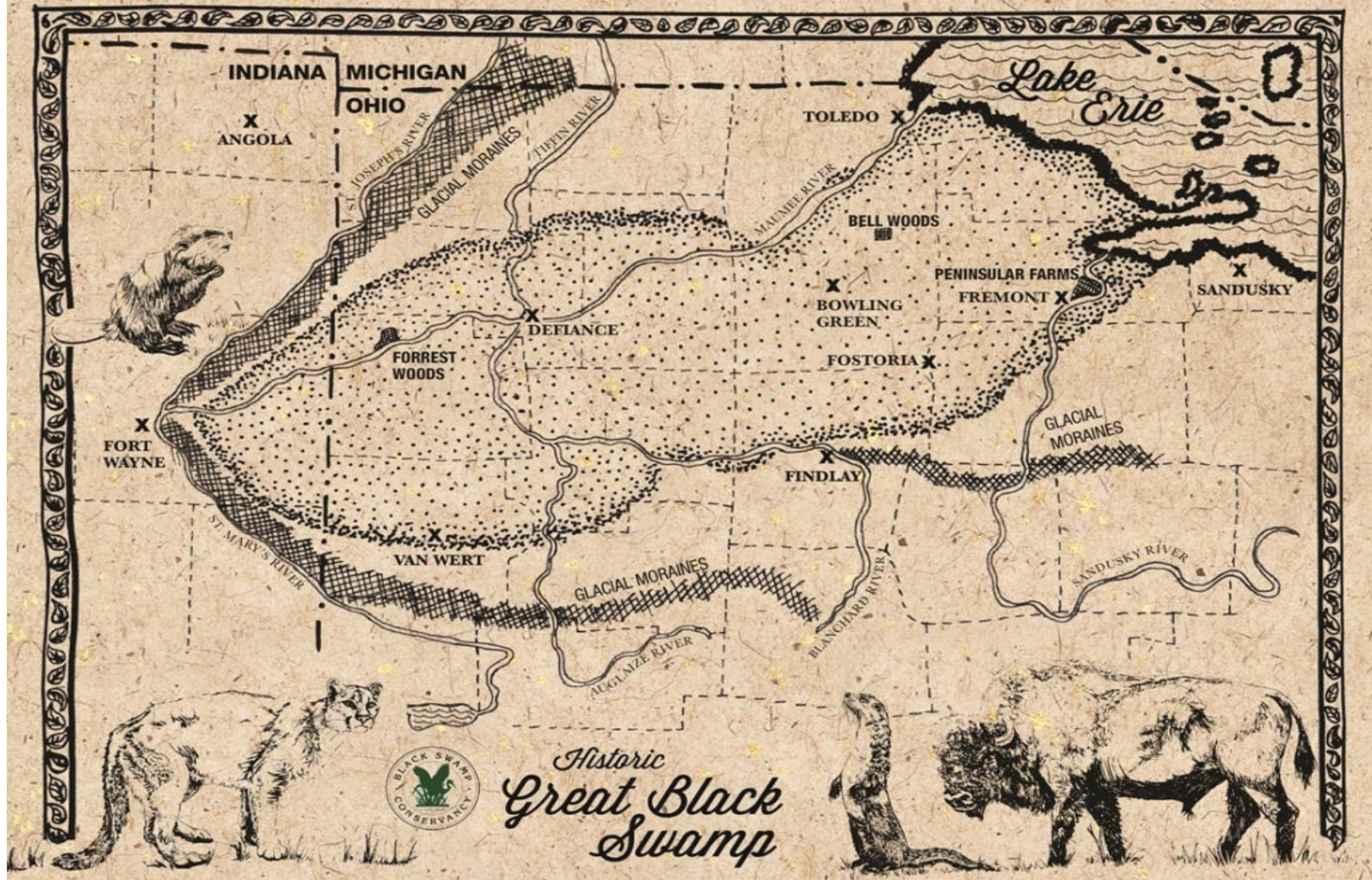


[BlackSwamp.ORG](http://BlackSwamp.ORG)

The mission of Black Swamp Conservancy is to preserve and protect natural habitats and family farms in northwest Ohio, now and for future generations.

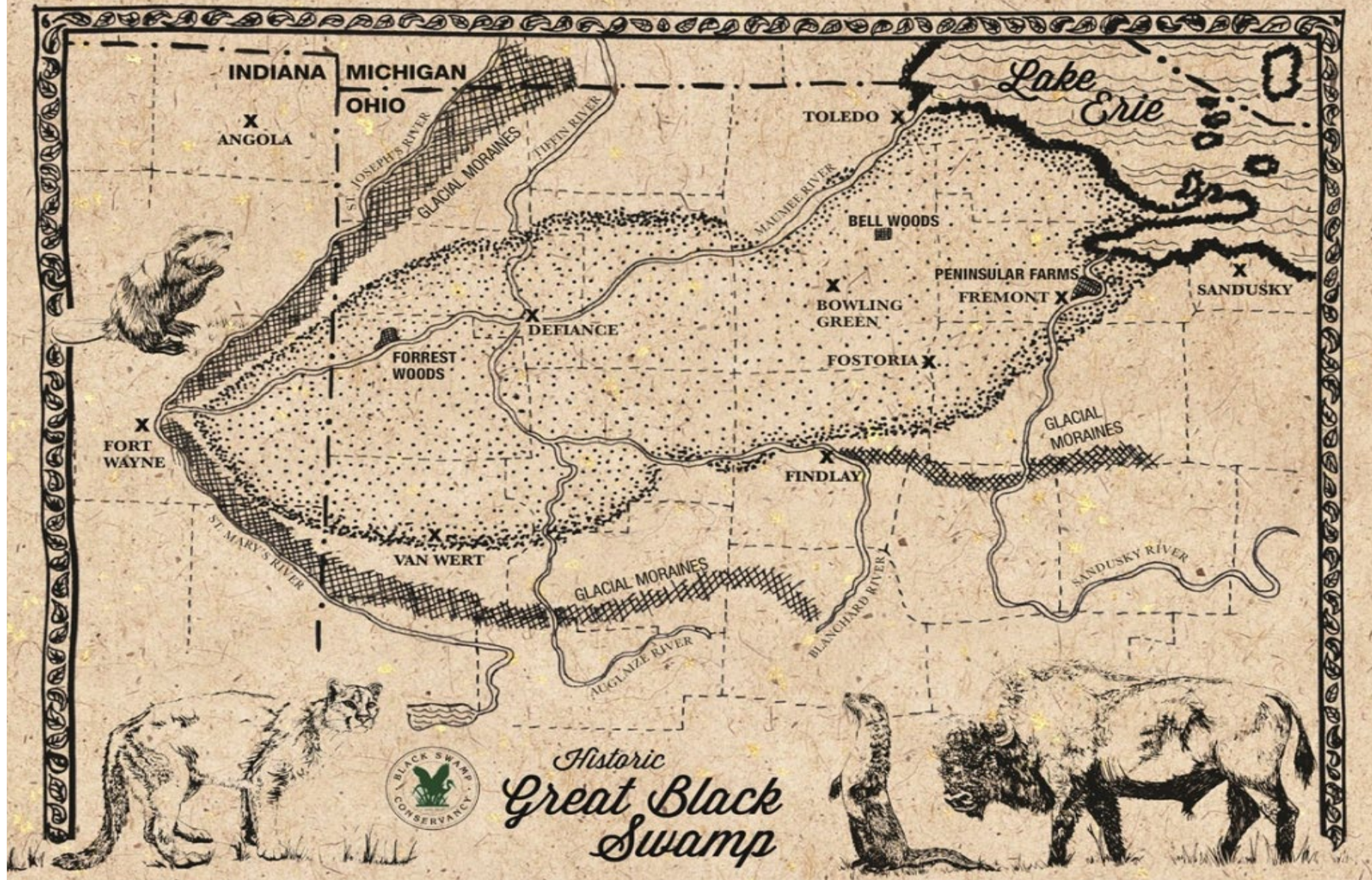


**BlackSwamp.ORG**



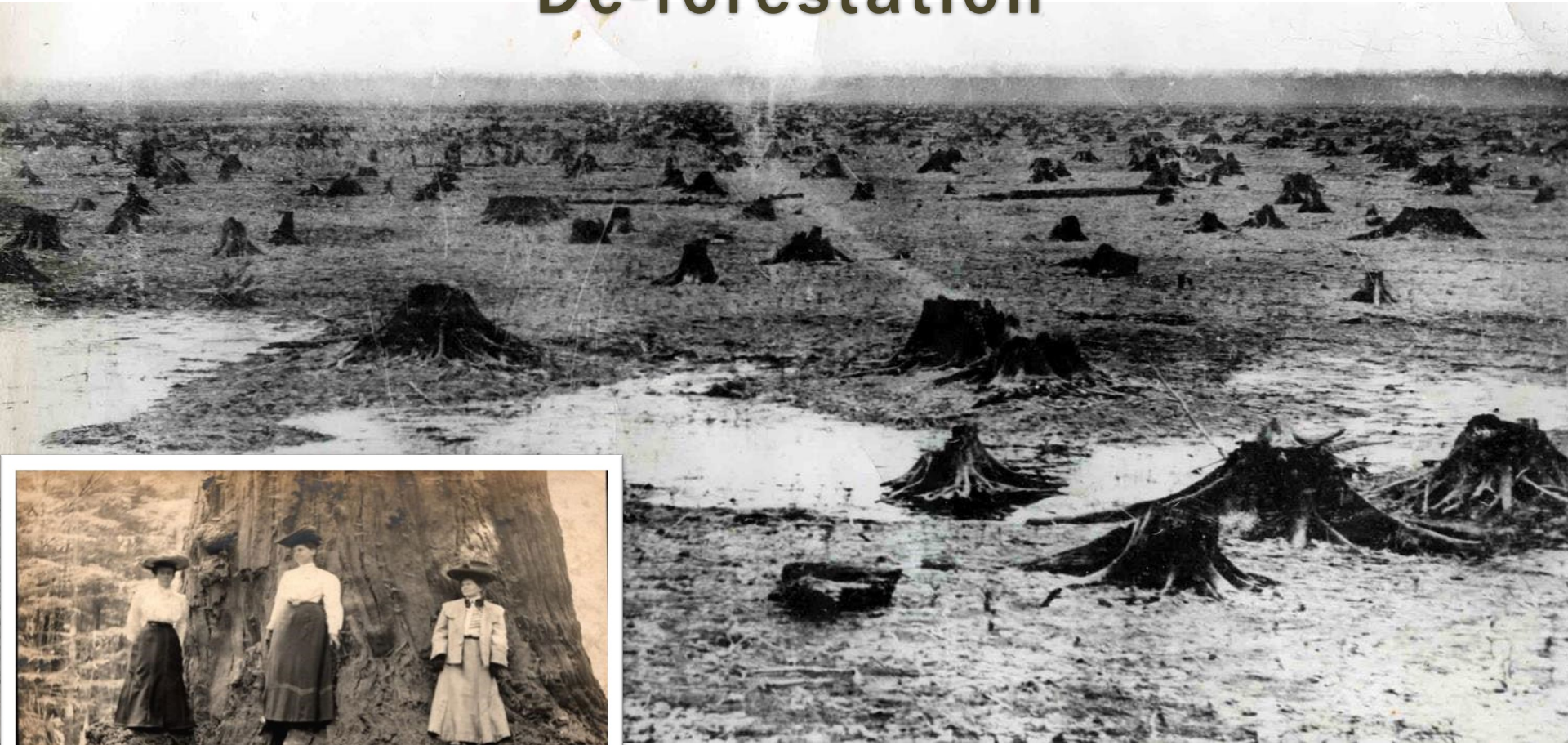
# LAKE ERIE – HARMFUL ALGAL BLOOM







# De-forestation

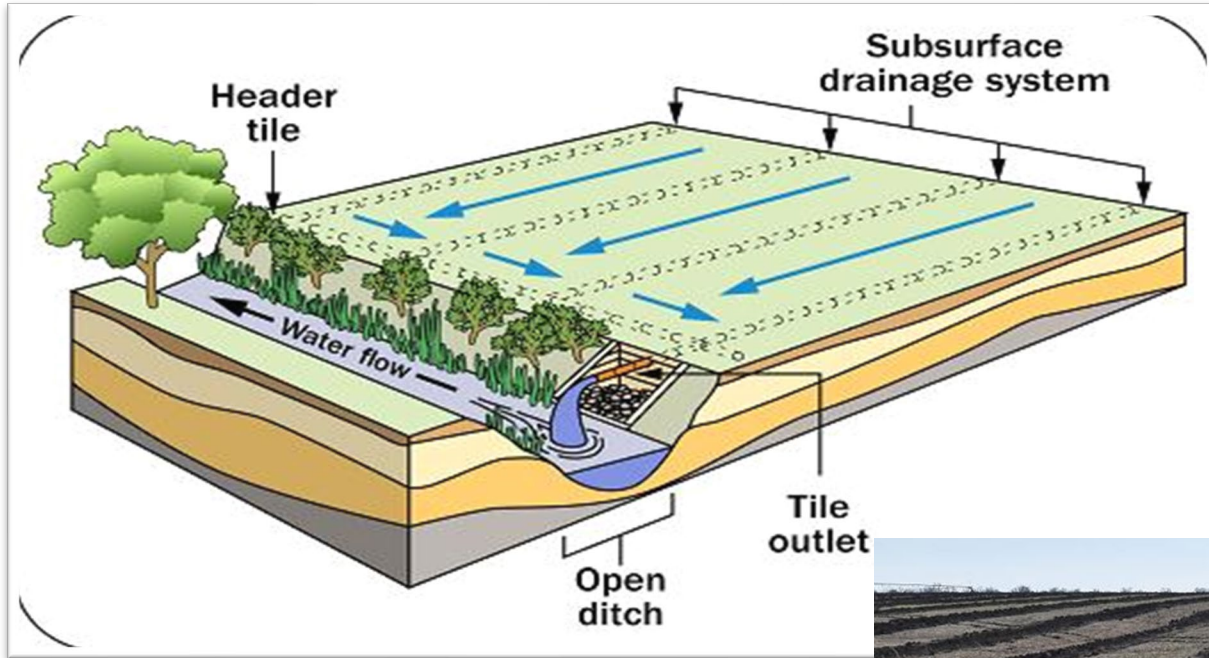


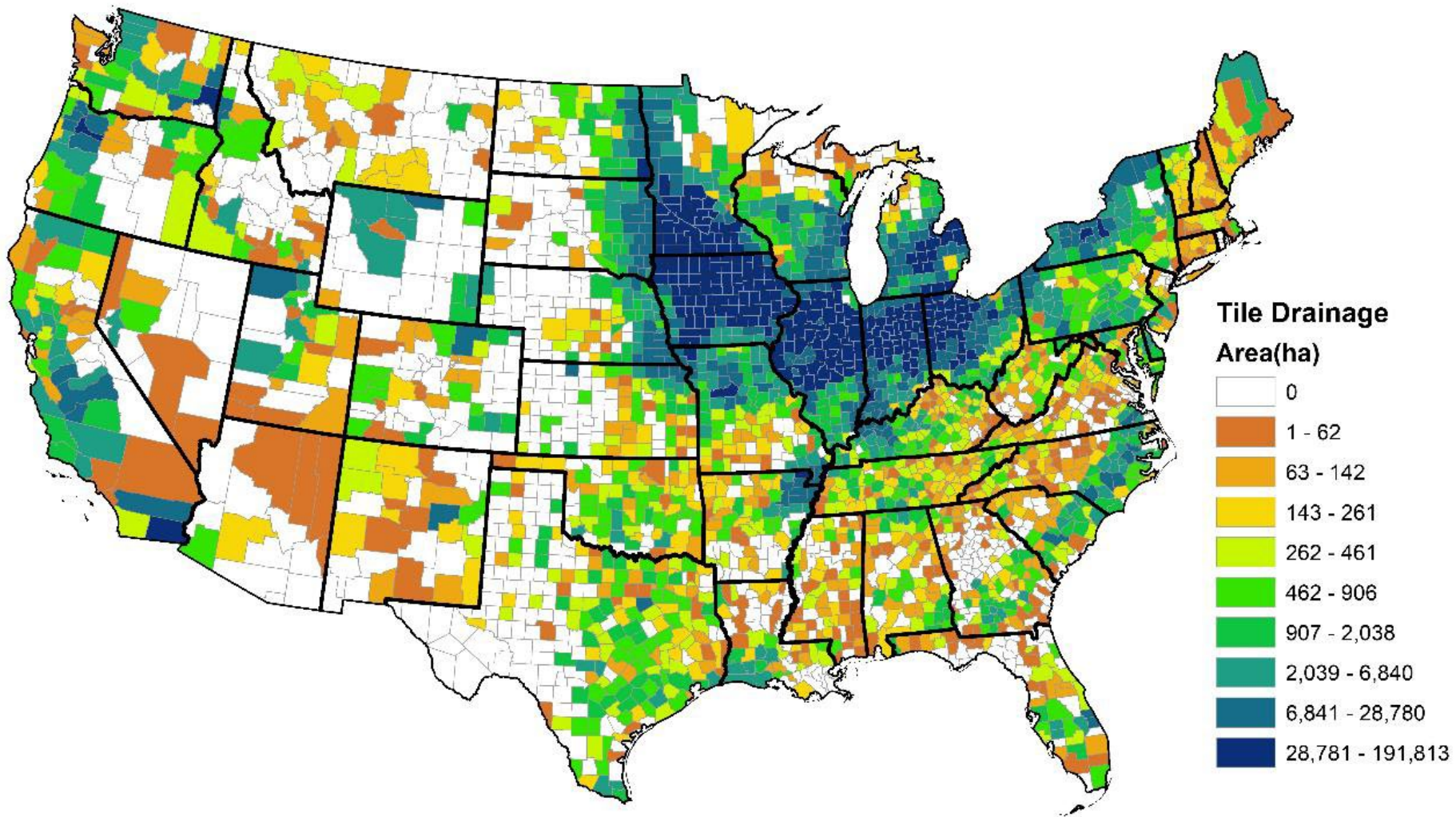
# Draining the Swamp





# ALTERED HYDROLOGY







## Current Land Cover:

75% Agricultural

11% Urban

11% Forest

3% Open Water / Wetlands

# RESTORING THE GREAT BLACK SWAMP

Long ago, during heavy rains, waterways that wound through here would simply overflow into the Great Black Swamp which stretched 1,500 square miles across northwest Ohio. When the swamp was drained in the 1800s, those ecosystems disappeared, along with the services they naturally delivered, like filtering rain and river water, reducing flooding, and providing habitat for fish, birds, amphibians, and other wildlife.

The marshes, meadows, and forested wetlands that have been restored here are once again delivering those services. In addition to retaining and filtering flood water, they provide critical breeding, spawning, nesting, and foraging habitat for species like River Redhorse, Bald Eagle and American Mink.

## FLOODPLAIN HABITATS

- Filter pollutants from water
- Provide wildlife habitat
- Reduce flood risks
- Help return clean water to underground aquifers
- Provide safe ways for people to access and enjoy the river



**H2Ohio**



This project was made possible by a grant from the **H2Ohio Initiative**, a statewide effort to ensure safe and clean water for all Ohioans.

**BlackSwamp.org**

# Maumee River Basin





INDIANA MICHIGAN

OHIO

Lake Erie

X  
ANGOLA

TOLEDO X

★

ST. JOSEPH'S RIVER  
GLACIAL MORAINES

TIFFIN RIVER

BELL WOODS

PENINSULAR FARMS

X  
SANDUSKY

X  
BOWLING GREEN

FREMONT X

★  
FORREST WOODS

X  
DEFIANCE

X  
FOSTORIA

★

GLACIAL MORAINES

X  
FORT WAYNE

X  
FINDLAY

ST. MARY'S RIVER

VAN WERT

GLACIAL MORAINES

McLAUGHLIN RIVER

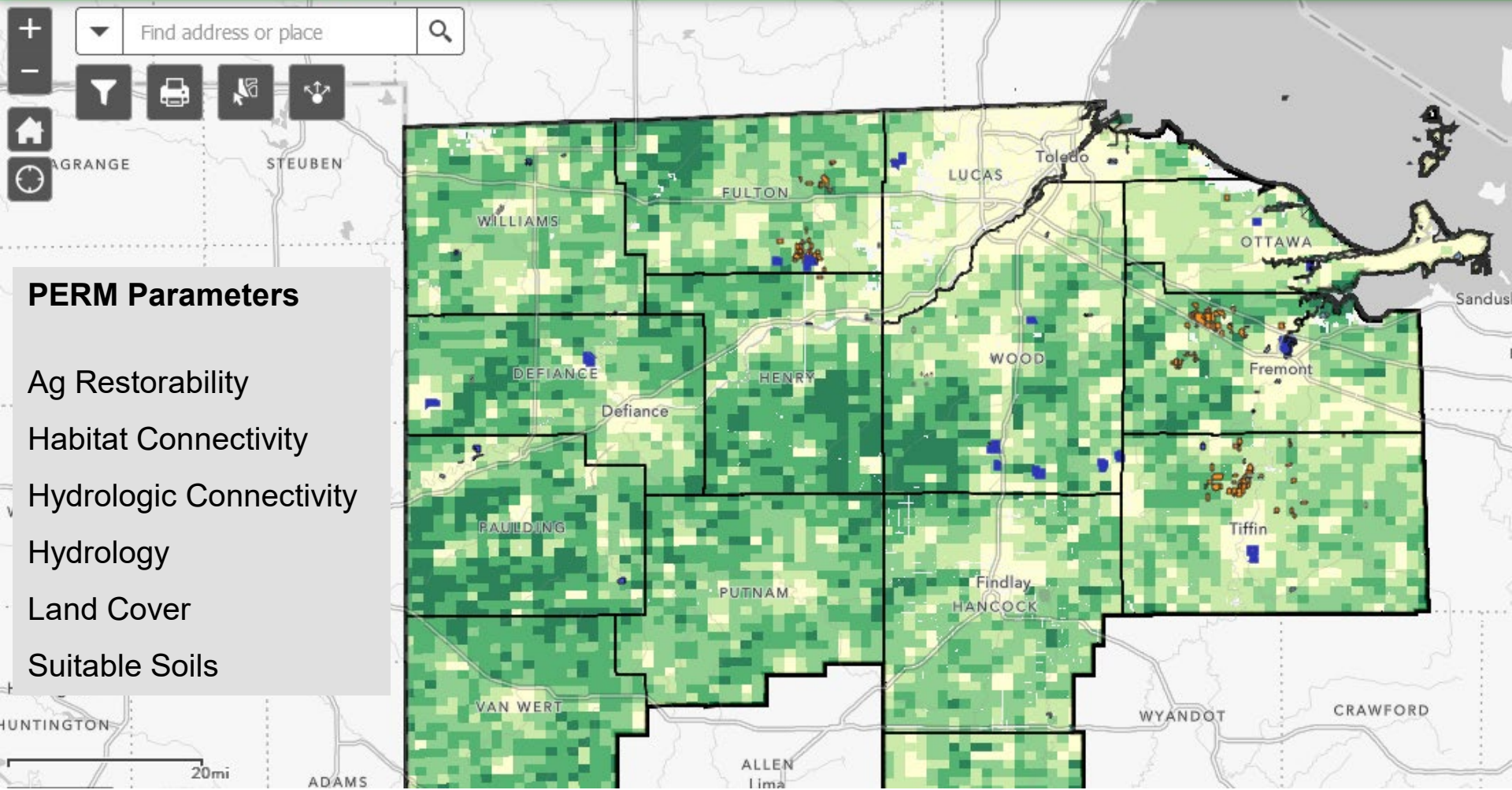
BLANCHARD RIVER

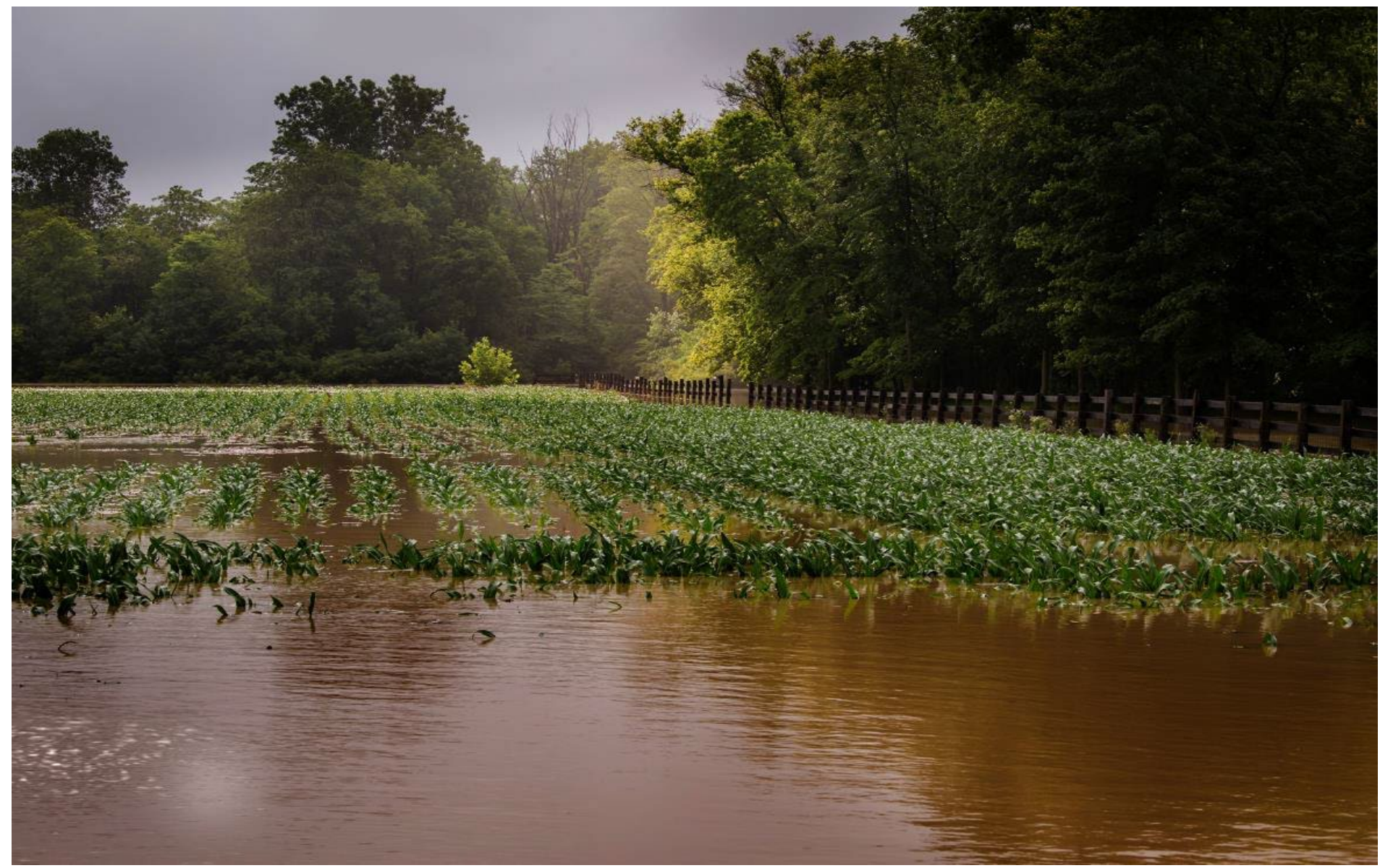
SANDUSKY RIVER



Historic  
Great Black  
Swamp

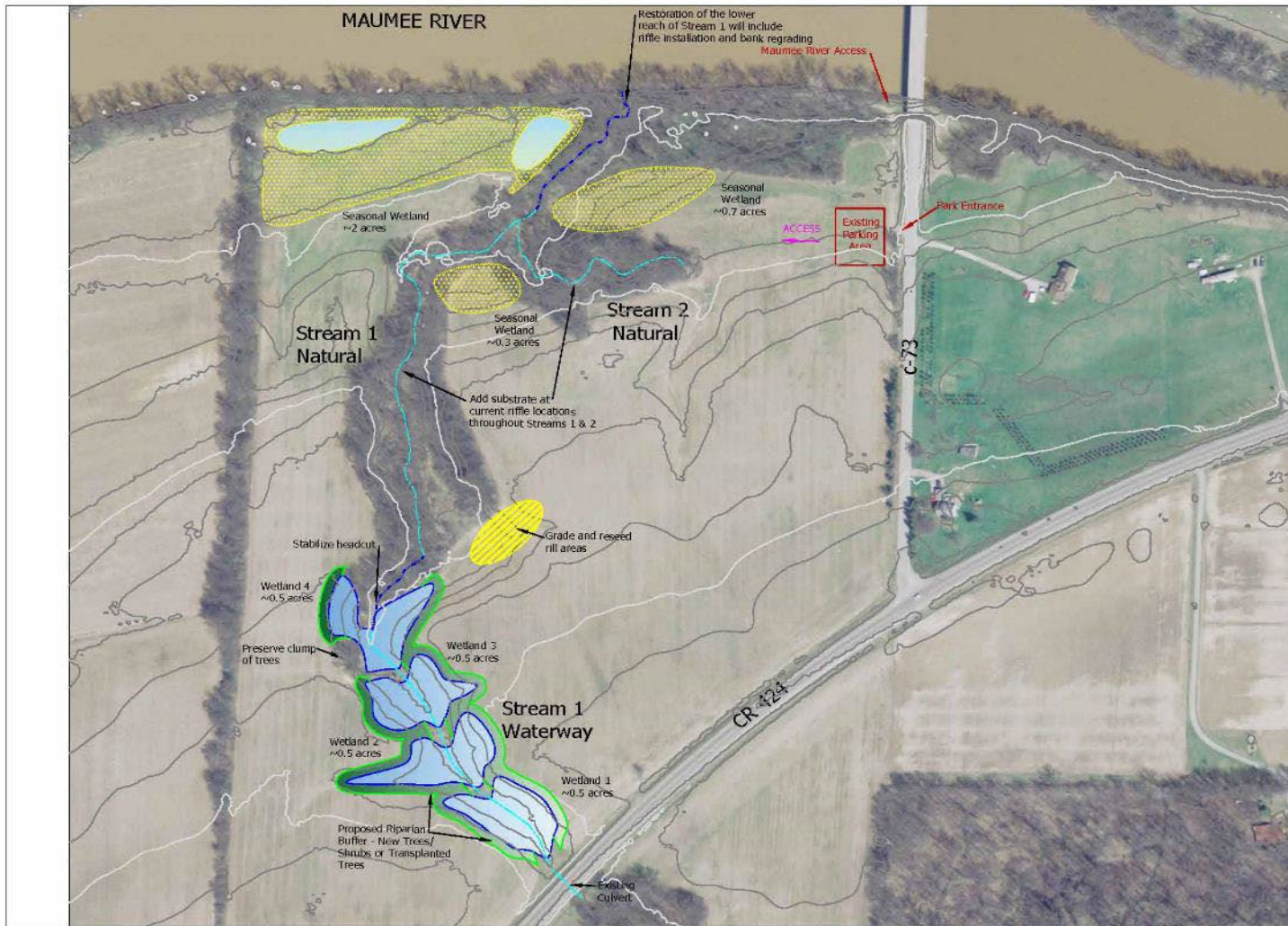
# Parcel-based Ecological Restoration Model







# FORDER BRIDGE RIVER ACCESS – MAUMEE RIVER



OXBOW RIVER & STREAM RESTORATION, INC.

**Water Resource Engineering and Restoration**  
 2905 Klondike Road  
 Delaware, Ohio 43015  
 (614) 832-9626  
 www.oxbowriver.com

**PROJECT**

**FORDER BRIDGE FLOODPLAIN RECONNECTION**  
 16839 C-73  
 Antwerp  
 Paulding County, Ohio  
 Black Swamp Conservancy

**CONCEPT PLAN**

**VICINITY MAP**

VICINITY SCALE 1"=200'

**LEGEND**

- Existing Contours
- Existing Ditch
- Proposed Stream
- Seasonal Wetland
- Emergent/Shrub Wetland
- Riparian Plantings
- Surface Regrading

*Note - Exhibit for Conversation only.*

N

BAR SCALE  
 0 250 500

<b>SCALE</b>	<b>EXHIBIT</b>
1"=200'	<b>1</b>
<b>PLOT DATE</b>	
2/27/20	
<b>FILE NAME</b>	
PLANVIEW	





# REDHORSE BEND NATURE PRESERVE – SANDUSKY RIVER



# REDHORSE BEND NATURE PRESERVE – SANDUSKY RIVER



# WHY I LOVE H2OHIO – AS A PRACTITIONER

- Funds Land Acquisition
- Requires Environmental Covenants (long term protection)
- **NO MATCH REQUIRED**
- FAST – quick proposal turn-around, 2-year projects
- Adequate funding for site assessments & design, to get the projects done right
- Funds monitoring separately

# MONITORING BY SCIENTISTS



QUESTIONS?







PROTECTING OHIO'S WATER

